

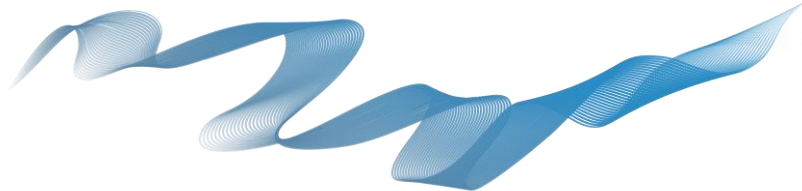
# Technical Specifications

The Haymarket, Wote Street, Basingstoke, Hampshire, RG21 7NW  
01256 819797

<b>Production Manager</b>	<a href="mailto:elfie.courcoult@anvilarts.org.uk">elfie.courcoult@anvilarts.org.uk</a> <b>Ext:</b> 118
<b>Assistant Production Manager</b>	<a href="mailto:jamie.bond@anvilarts.org.uk">jamie.bond@anvilarts.org.uk</a> <b>Ext:</b> 128
<b>Production Administrator</b>	<a href="mailto:amanda.wise@anvilarts.org.uk">amanda.wise@anvilarts.org.uk</a> <b>Ext:</b> 164
<b>Programme Manager</b>	<a href="mailto:ann.dickson@anvilarts.org.uk">ann.dickson@anvilarts.org.uk</a> <b>Ext:</b> 111
<b>Programme Assistant</b>	<a href="mailto:sophie.pedder-russo@anvilarts.org.uk">sophie.pedder-russo@anvilarts.org.uk</a> <b>Ext:</b> 108

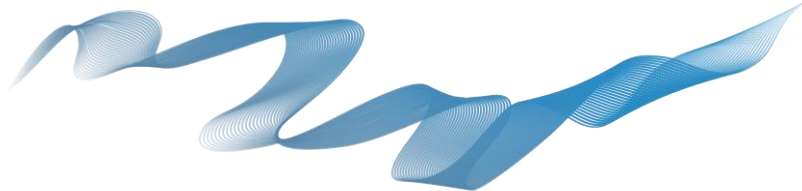
*Updated 2024*





# Contents

<b>Stage / Flying</b>	<b>3</b>
<b>Get In</b>	<b>4</b>
<b>Power Supplies</b>	<b>4</b>
<b>Communications</b>	<b>5</b>
<b>Dressing Room Facilities</b>	<b>6</b>
<b>Formats</b>	<b>7</b>
<b>Orchestra Pit</b>	<b>8</b>
<b>Stage Equipment and Masking</b>	<b>8</b>
<b>Lighting</b>	<b>9</b>
<b>Mixer Positions</b>	<b>10</b>
<b>Sound</b>	<b>10 – 12</b>
<b>Data Projector and Screen</b>	<b>13</b>
<b>Appendix A – Stage and Ground Plans</b>	<b>14</b>



## Stage / Flying

**Stage Plan:** See Appendix A

<b>General</b>	Proscenium Opening	8970mm x 5000mm
	Setting Line to Back Wall	8030mm at Centre Line
	Setting Line to Full Black	7200mm
	Setting Line to Edge of Stage	1450mm
	Setting Line to Edge of Forestage Extension	3100mm
	Depth of Forestage Extension	1640mm
	Height of Stage from Stalls Level	940mm

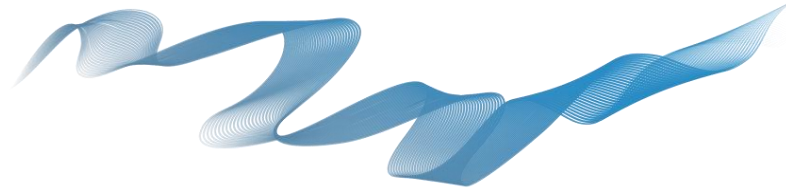
<b>Distance to house LX Bars from Setting Line</b>	LX1 – 600mm
	LX2 – 2200mm
	LX3 – 3800mm
	LX4 – 5600mm
	LX5/ Flood Bar – 6200mm

<b>Flying</b>	Height to Underside of Fly Floor	6350mm
	Height to Grid	10230mm
	Width Between Fly Galleries	

SWL = Safe Working Load / PL = Single Point Load

		Quantity
Advance Truss	(500kg SWL) (PL 55kg)	1
House Curtain Bar	(175kg SWL) (PL 55kg)	1
Motor Bars	(300kg SWL) (PL 60kg)	5
Upstage Truss	(500kg SWL) (PL 55kg)	1
Hemp Sets (non-counterweighted)	(110kg SWL) (PL55kg)	29
Bar Lengths		10000mm

Please see appendix A for stage and ground plans



## Get In

Access to stage is not level and requires either the use of the auditorium pit lift or winch system at the dock door. The dock door is +4200mm above ground level and all items must be winched in from ground level by a single pickup motor hoist.

**Max Dimensions for Get Ins:** Via Dock door @ +4200mm (h) 2.5M x 5.3M  
Via Stage Door/Pit Lift 2.4M Diagonal

## Power Supplies

### Visiting Lighting Supply Located DSR

1 x 63A 3 Phase Ceeform Socket  
1 x 63A Single Phase Ceeform Socket  
1 x 32A Single Phase Ceeform Socket  
2 x 16A Single Phase Ceeform Sockets

### Visiting Sound Supply Located DSL

1 x 32A Single Phase Ceeform Socket

### Stage Locals

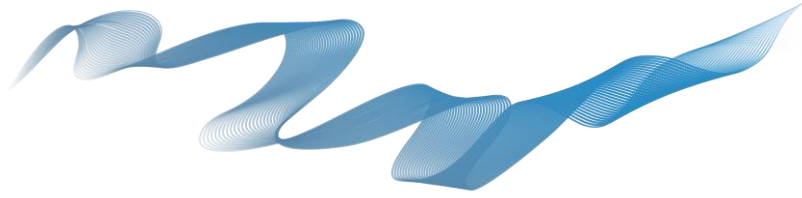
A mixture of 13A and 15A sockets located around the stage, fly gallery, front of house bridge and auditorium

Selection of 32a to 16a step down distribution boxes.

Selection of 16a to 13a step down distribution boxes.

Selection of 32a and 16a cable.

Selection of 13a extensions



# Communications

Stage Manager's desk situated DSR comprising:

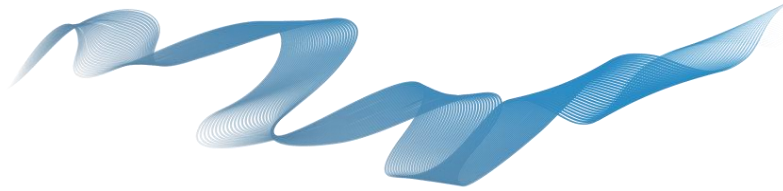
- Cue Lights control station
- Infrared stage video monitor
- Show timer
- FOH and Backstage Paging
- A belt pack and headset intercom attached to the desk

Intercom comprising:

- 10 x 1 channel belt packs and headsets
- 9 x Cue lights

Additional communications including:

- 2 Channel IR audio descriptive system
- Video Show Relay
- Stage Video Patch System
- Video, audio and data running to various points around the stage and auditorium.



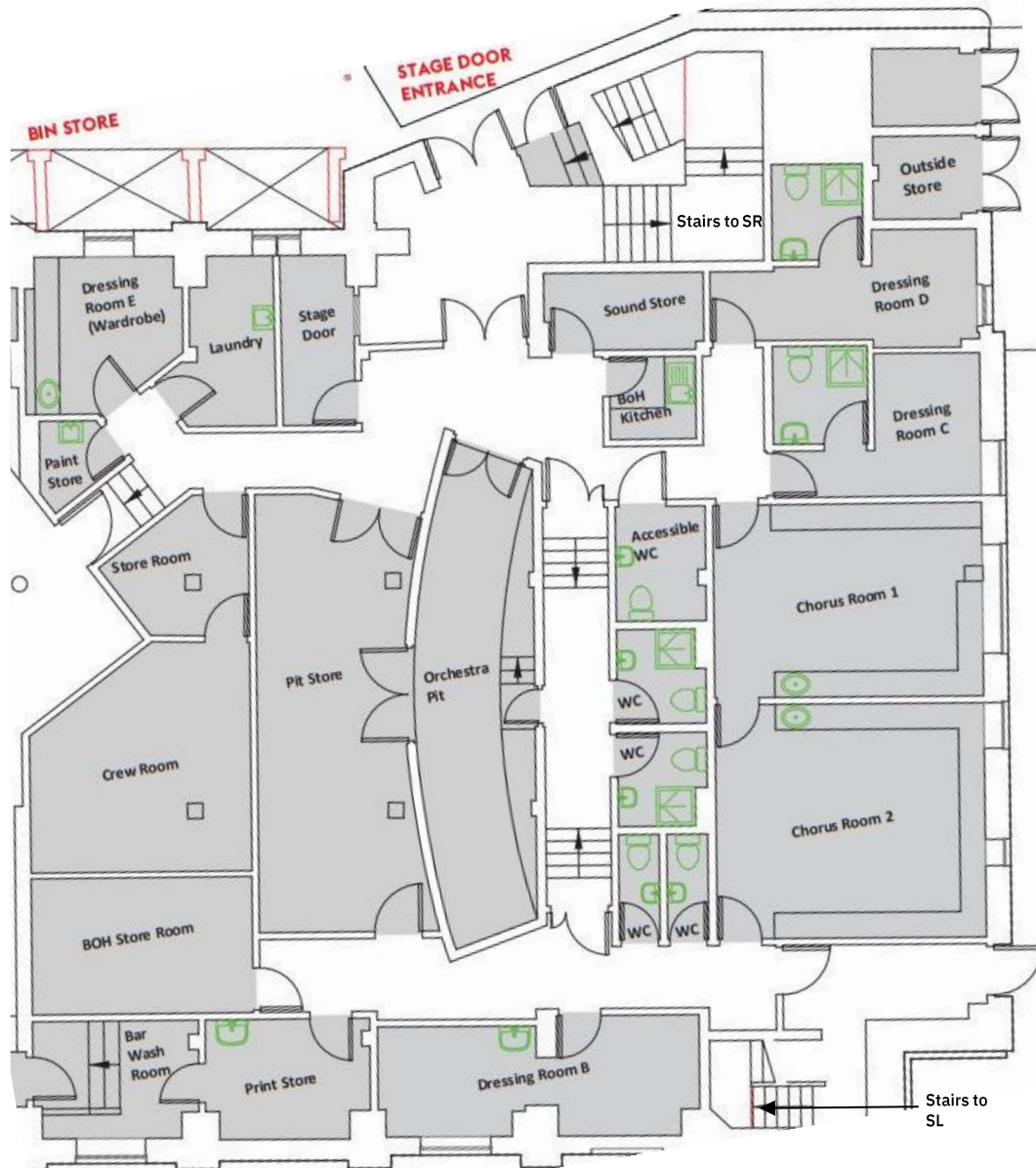
## Dressing Room Facilities

- 2 x En-suite dressing rooms suitable for 1 or 2 performers (D & C)
- 2 x Large Chorus dressing rooms suitable for a maximum of 20 performers each
- 1 x Dressing room suitable for up to 4 people (B)
- 1 x Dressing Room suitable for 4 people / Visiting Company Managers Room (A)
- 1 x Additional Performer Storage Room
- 1 x laundry room

Each dressing room has a safe for personal possessions.

There are 5 toilets which are used by staff and performers.

The Dressing rooms are at Stage Door level and the Stage is up a flight of stairs.



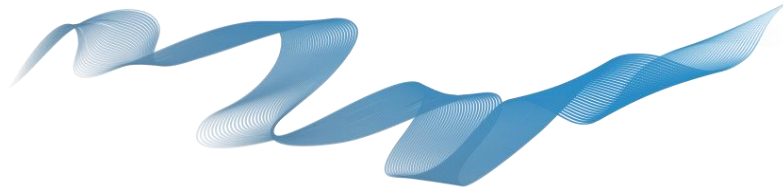


# Formats

The Auditorium Pit Elevator can be used in 3 positions.

1. At stage level to create a stage extension
2. At Auditorium level (usual position)
3. At Orchestral Pit Level





## Orchestra Pit

An orchestra pit is available in some formats. 13A Power is available in the Orchestra pit. 12 Music stands and 12 chairs are available for use in the pit. Please see Appendix A for a section showing pit positions.

## Stage Equipment and Masking

A selection of hard masking flats is available to create a variety of formats. To supplement this, the following are also available:

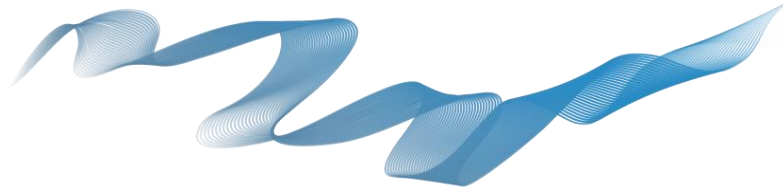
Full White Cyclorama		X 1
Full Blacks	Permanently Rigged	X 2
Mid Blacks	Permanently Rigged	X 2
Black Gauze		X 1
White Gauze		X 1
Thin Black Blinders		X 2
Tab Swipe Track		X 1
Curtain Track		X 1
Black Masking Book Flats		X 2
Treads for auditorium/stage access		X 2
8' x 4' Lite Deck		X 2
Black Armless Chairs		X 12
Round Table – Adjustable Height		X 1
Black Stools		X 3
Music Stands		X 12
Assorted Stage Weights	(12.5kg and 25kg)	
Assorted Clothes Rails		
Assorted Folding Tables		

House tabs can only be swiped, not flown. We can hide the house tabs if they're not required for your performance.

Dip Traps run the depth of the stage at either side and underneath the Iron. These can be seen on the plans in Appendix A.

Black Harlequin dance floor is available to cover the entire stage and stage extension on request.

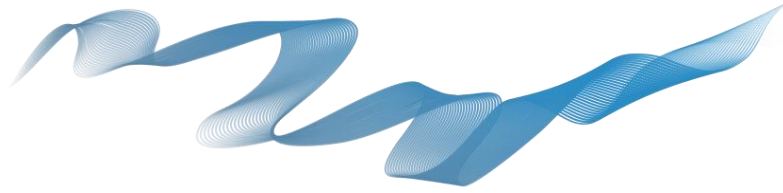




# Lighting

<b>Control:</b>	1	x	ETC Ion XE20 4 x DMX Universes, EOS 40 fader wing
<b>Dimmers:</b>			ETC Sensor – 205 Dimmer Channels 20 Non Dim Circuits
<b>Lanterns:</b>	35	x	Selecon RAMA 1.2K Fresnel
	13	x	Floor Cans (5 Black and 6 Silver)
	28	x	Par 64 (CP62 standard & CP60 & 61 also available)
	2	x	Selecon 2.5K Arena Theatre Fresnel
	30	x	ETC Source 4 w/ 19/26/36 degree lens tubes 1 x 50 degree lens and 1 x 10 degree lens
	12	x	ETC Source 4 Zoom (Rigged on FOH Bridge)
	19	x	ETC Source 4 Jnr Zoom (25/50 lens)
	17	x	CODA 1K Cyc Flood
	1	x	ETC Source 4 Jnr (Fixed 36 degree) Assorted Birdies
<b>Intelligent:</b>	7	x	Clay Paky Alphaspot HPE300 (vector mode)
	6	x	ETC Colorsources Pars (Deep Purple)

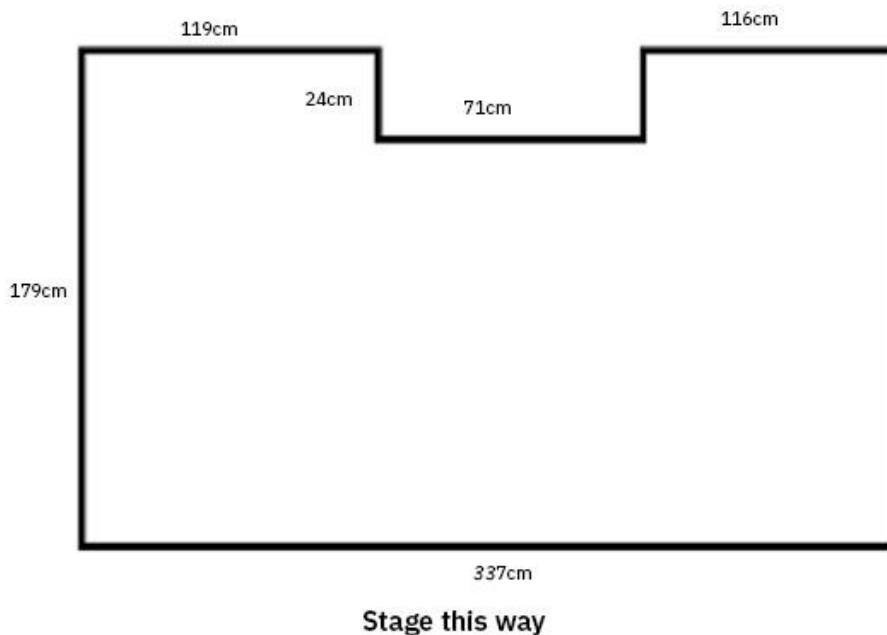
Gobo Holders and Irises are available on request.



# Sound

## Mixer Positions

### FOH Mixing Position Footprint Measurements



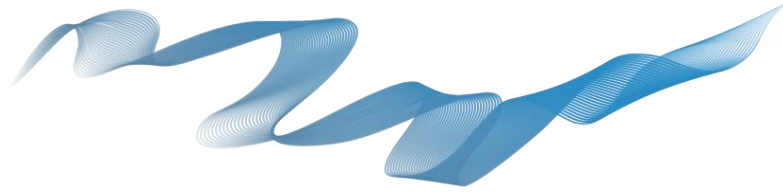
Plan not to scale

There are two available mix positions for FOH. One is sited at the rear of the stalls underneath the circle balcony. This position is suitable for larger consoles and has a clear view of the stage. Only 13a power is available at this mixing position. No seating requires removing to use this position.

N.B Visiting companies please be aware; this mix position can accommodate most consoles. However some larger consoles will not fit due to space restrictions.

The second is located inside the control room. There is a sliding glass window which can be moved to allow a clear listening position of the P.A. This position is not suitable for large or digital consoles due to restricted space and no multicore run. Only 13a power is available at this mixing position.

Tie lines around located around the stage and auditorium allowing you to patch into the house system from a variety of locations.



## **Amplification**

All amplification for the P.A system is provided by Full Fat Audio.

## **P.A System**

P.A system built around a ground stacked EM Acoustics system. This is supplemented with various delays around the auditorium for extra stalls and circle coverage.

## **Stalls Level Stereo PA**

2 x EMS 152 Full Range  
2 x EMS 81 Stalls in fills  
1 x EMS 81x Stalls centre fill mounted above proscenium

## **Subwoofers**

2 x i12 ULF subwoofer  
2 x EMS 215 subwoofer

## **Circle Level Stereo PA**

2 x EMS 122 Full Range

## **Delays**

2 x EMS 61 on rear of lighting bridge

## **Processing**

1 x XTA DP 448- Main PA and Delays  
1 x XTA DP 424- Subwoofers

## **Control**

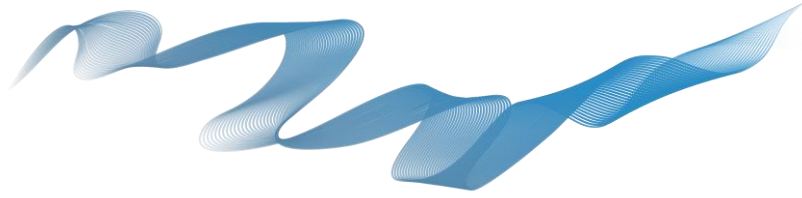
Midas M32 (32 Mono inputs + 6 Stereo; 25 Mix buses)  
2 x Midas DL16 stage boxes (16 mono inputs, 8 mono outputs, total 32 inputs, 16 outputs)

## **Monitor Speakers**

6 x EM Acoustics M10 floor monitors

## **Multicores**

32/4 analogue multicore installed running to stage left from stalls mixer position.  
Cat5e UTP multicore installed running stage left from the stall's mixer position.  
Cat5e UTP multicore reel 50m can either run to Stage left (preferred) or stage right.  
12 Channel XLR Satellite box  
1 x 12 Channel Return cable. (Used for L, R, Mono, Monitors)  
2 x 12 Channel Send cable



## **Playback**

- 2 x Denon CD player
- 2 x Tascam Minidisk player
- 1 x Apple Mac Book pro with Qlab 3, 4 and 5

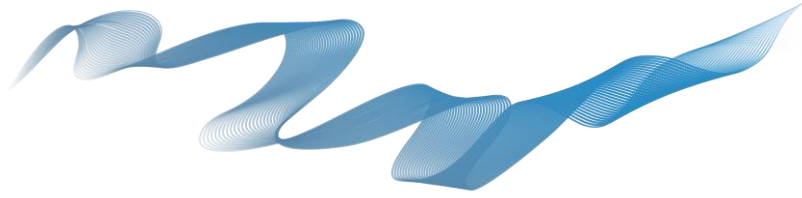
## **Radio Microphone system**

- 12 x Sennheiser EM500 G3 receivers (Four receivers to a flight case with 1 x antenna splitter)
- 3 x ASA1 antenna splitter
- 12 x Sennheiser SK500 G3 belt pack transmitters
- 4 x Sennheiser E965 wireless handheld Microphone
- 14 x Pulse 3200LJ headset microphones
- 12 x MKE2 mic beige
- 4 x MKE2 mic black
- 2 x A1031 omnidirectional antenna
- 4 x A2003 directional antenna
- 4 x AB3 GB range masthead amplifier
- 3 x Powercon – 13a

**\*PLEASE NOTE: The above microphones are used across all our venues so please contact the Production Department to check availability.**

Anvil Arts is currently licenced by Ofcom to use frequencies on channel 38 (606.500 MHz to 612.000 MHz).

A good selection of microphones, cables, D.I boxes, adaptors, stands and other equipment is available. Please contact the Production Department for a full audio equipment inventory.



# Data Projector and Screen

**\*PLEASE NOTE: The projector is used across The Anvil and The Haymarket so please contact the Production Department to check availability.**

## **Projector / Lens / Rigging:**

Panasonic PT-DZ 13K DLP Projector  
Panasonic ET-D75 LE6 0.9-1.1:1 Zoom Lens  
Panasonic ET-RFD91 Projector Cradle  
KPM Flying Bracket

## **Cabling / Distribution:**

1x CYP PU-507TX-1H 1:1 HDBaseT HDMI/LAN/IR/RS-232/PoE Twisted Pair Transmitter with HDMI Loop  
(Max. 100m at 1080p or 4K; 1 x HDMI input; 1 x HDBaseT, 1 x HDMI output)

1 x 45m run of Kramer C-HDK6/HDK6-150 RJ-45 Four-Pair U/FTP Cable (23AWG)  
Optimized for HDBaseT

1 x 4.6 m Kramer C-DPM/HM-15 DisplayPort to HDMI (M-M)

Assorted VGA runs (50m)

1 x Roland V-4EX Vision Mixer

## **Screen:**

Front / Rear Projection Screen & Frame (12' x 9')

Please contact the Production Department for hire prices and availability.



+4700mm TO UNDERSIDE OF HOIST BEAM (LOWEST POINT OF STAGE AREA)

+5590mm TO UNDERSIDE OF PIPE

+2350mm TO UNDERSIDE OF LADDER GUARD

1/2C48MM BAR ATTACHED TO BACK WALL AT +6007mm

+6350mm TO UNDERSIDE OF TECHNICAL GALLERIES ABOVE

+6210mm CLEAR UNDER THIS AREA

+3610mm TO UNDERSIDE OF GALLERY

+2650mm TO U/S OF PERCH  
+2500mm TO U/S OF TRUNKING

2640mm TO U/S OF PERCH

COUNTERWEIGHT

DRENCHER PIPE

IRON THIS SECTION DROPS TO STAGE LEVEL

IRON THIS SECTION DROPS TO +2500mm ABOVE STAGE LEVEL

DIP TRAPS

C/W

LADDER

LINE OF ORCHESTRAPIT OR FORESTAGE EXTENSION

CIRCLE FRONT (NOT EXACT POSITION)

BRIDGE (NOT EXACT POSITION)

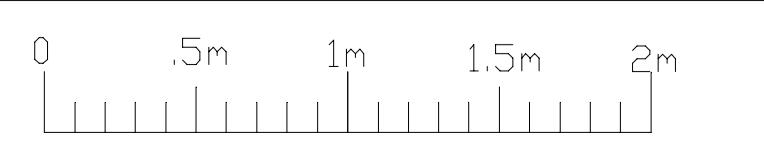
- B/WALL
- TEMP
- H29
- H28
- H27
- H26
- W5
- H25
- H24
- V4
- H23
- H22
- H21
- H20
- H19
- H18
- H17
- H16
- V3
- H15
- H14
- H13
- H12
- H11
- H10
- H9
- W2
- H8
- H7
- H6
- H5
- H4
- H3
- H2
- W1
- H1
- HC
- SETTING LINE

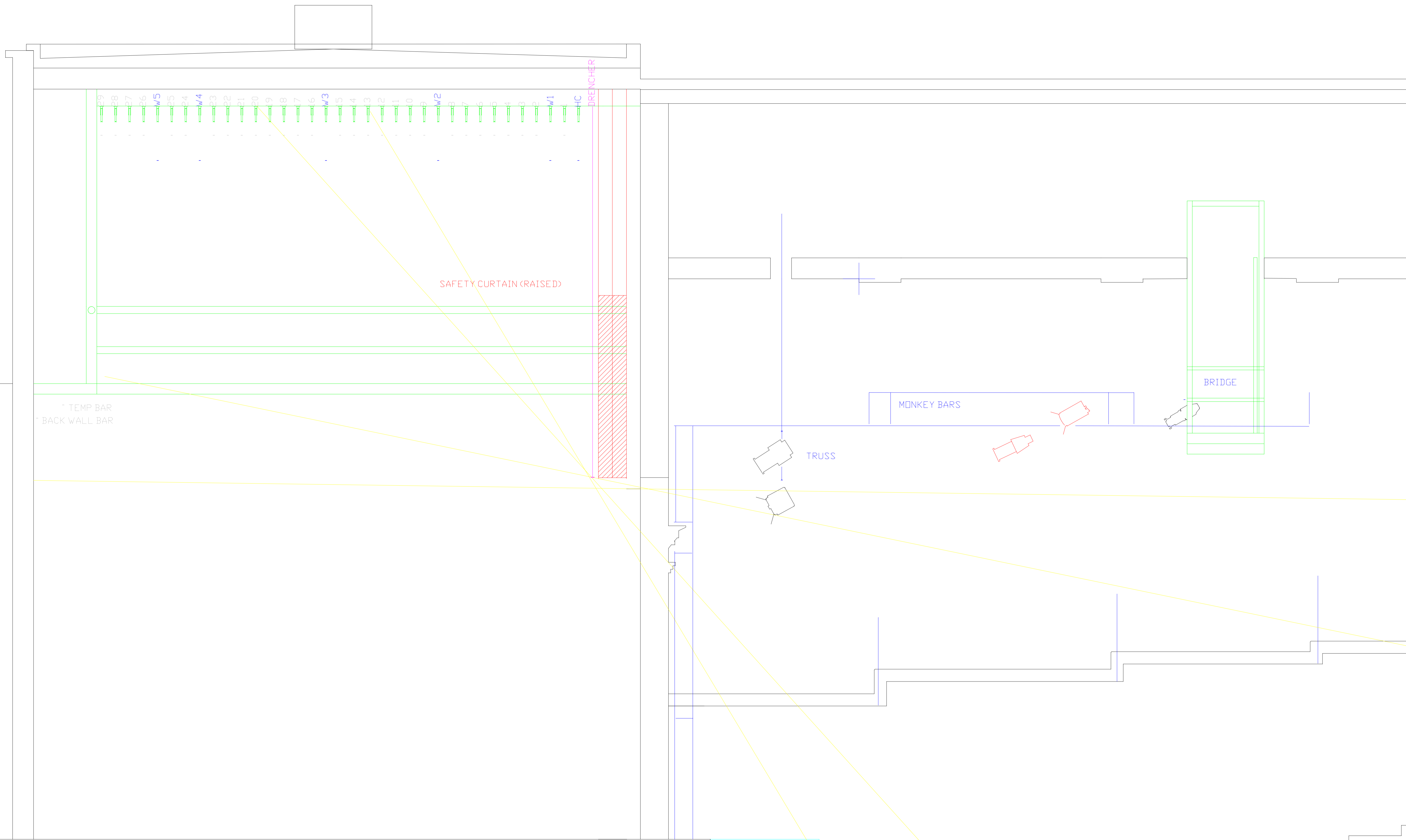
CLASS C  
The information contained is:  
unclassified

INFORMATION	
Proscenium Opening	9970mm(w)x5000mm(h)
Bar Width	10000mm
Width Between Fly Floors	10400mm
Stage Depth Setting Line to Back Wall	8030mm@CL
Setting Line to Edge of Stage	1450mm
Setting Line to Edge of Forestage/Pit Lift	3100mm
Depth of Forestage/Pit Lift	1640mm
Height of Stage from Stalls Level	940mm
Height to Underside of Fly Floors (See DWG)	6250mm
Height to Underside of Pulleys at Grid	10230mm
Safe Working Loads: Hems	187.50Kg
Motor Bars	300.00Kg
House Curtain Bar	175.00Kg
	500.00Kg
wysiwyg design	
	2.5Mx3.3M
	2.5M Diagonal

Haymarket Theatre

Scale: 1:25





CLASS C  
The information contained is:  
unclassified

**INFORMATION**

Proscenium Opening	8970mm(w)x5000mm(h)
Bar Width	10000mm
Width Between Fly Floors	10400mm
Stage Depth Setting Line to Back Wall	8030mm(BCL)
Setting Line to Edge of Stage	1450mm
Setting Line to Edge of Forestage/Pit Lift	3100mm
Depth of Forestage/Pit Lift	1640mm
Height of Stage From Stalls Level	940mm
Height to Underside of Fly Floors(see DWG)	6350mm
Height to Underside of Pulleys at Grid	10230mm
Safe Working Loads Hengs	187.50Kg
Motor Bars	300.00Kg
House Curtain Bar	175.00Kg
F/DH Truss	500.00Kg
Max Dimensions for Set Ins	
lock Doors @ +4200mm	2.9Mx5.3M
stage Door/Pit Lift	2.5M Diagonal

STAGE LEVEL

AUDITORIUM

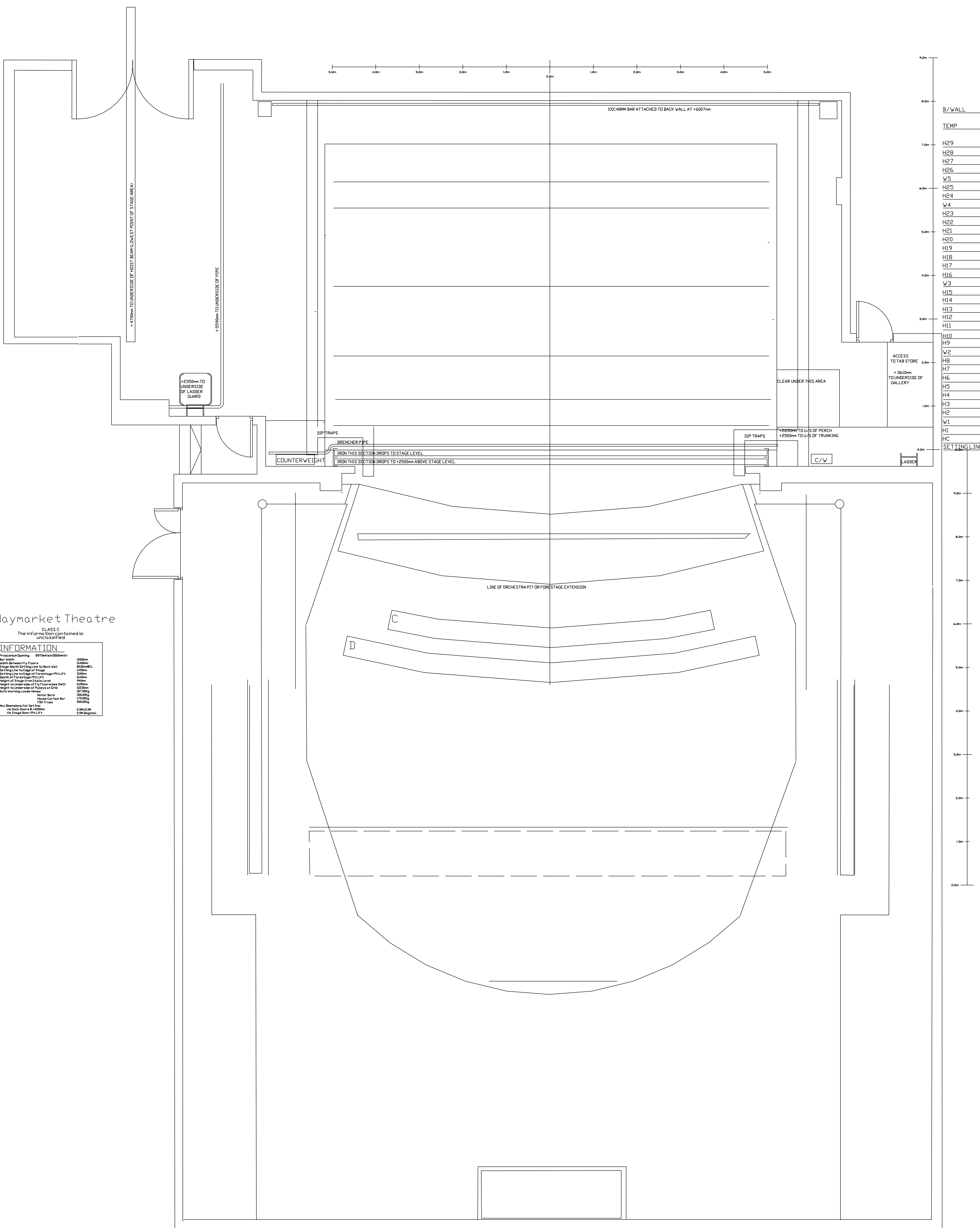
HAYMARKET THEATRE  
SECTION

1:25

May '07

⊕ INDICATES SIGHTLINE





- B/WALL
- TEMP
- H29
  - H28
  - H27
  - H26
  - W5
  - H25
  - H24
  - W4
  - H23
  - H22
  - H21
  - H20
  - H19
  - H18
  - H17
  - H16
  - W3
  - H15
  - H14
  - H13
  - H12
  - H11
  - H10
  - H9
  - W2
  - H8
  - H7
  - H6
  - H5
  - H4
  - H3
  - H2
  - W1
  - H1
  - HC
  - SETTING LINE

### Haymarket Theatre

CLASS C  
The information contained is unclassified

INFORMATION	
Proscenium Opening	8970mm x 2000mm
Bar Width	1000mm
Width Between Floors	1400mm
Stage Deck Setting Line to Back Wall	600mm c/c
Setting Line to Edge of Stage	1400mm
Setting Line to Edge of Forestage/Pit Lids	3100mm
Depth of Forestage/Pit Lids	1640mm
Height of Stage from Stage Level	940mm
Height to Underside of Fly Truss/Stage DND	4200mm
Height to Underside of Pulleys at Grid	10700mm
Stage Working Clear Height	18750mm
Motor Bars	200.00kg
House Curtain Bar	175.00kg
FDI Truss	200.00kg
Max Dimension for Set In	
via Back Doors @ 4000mm	2.5m c/c
via Stage Door/Pit Lids	2.5m Diagonal